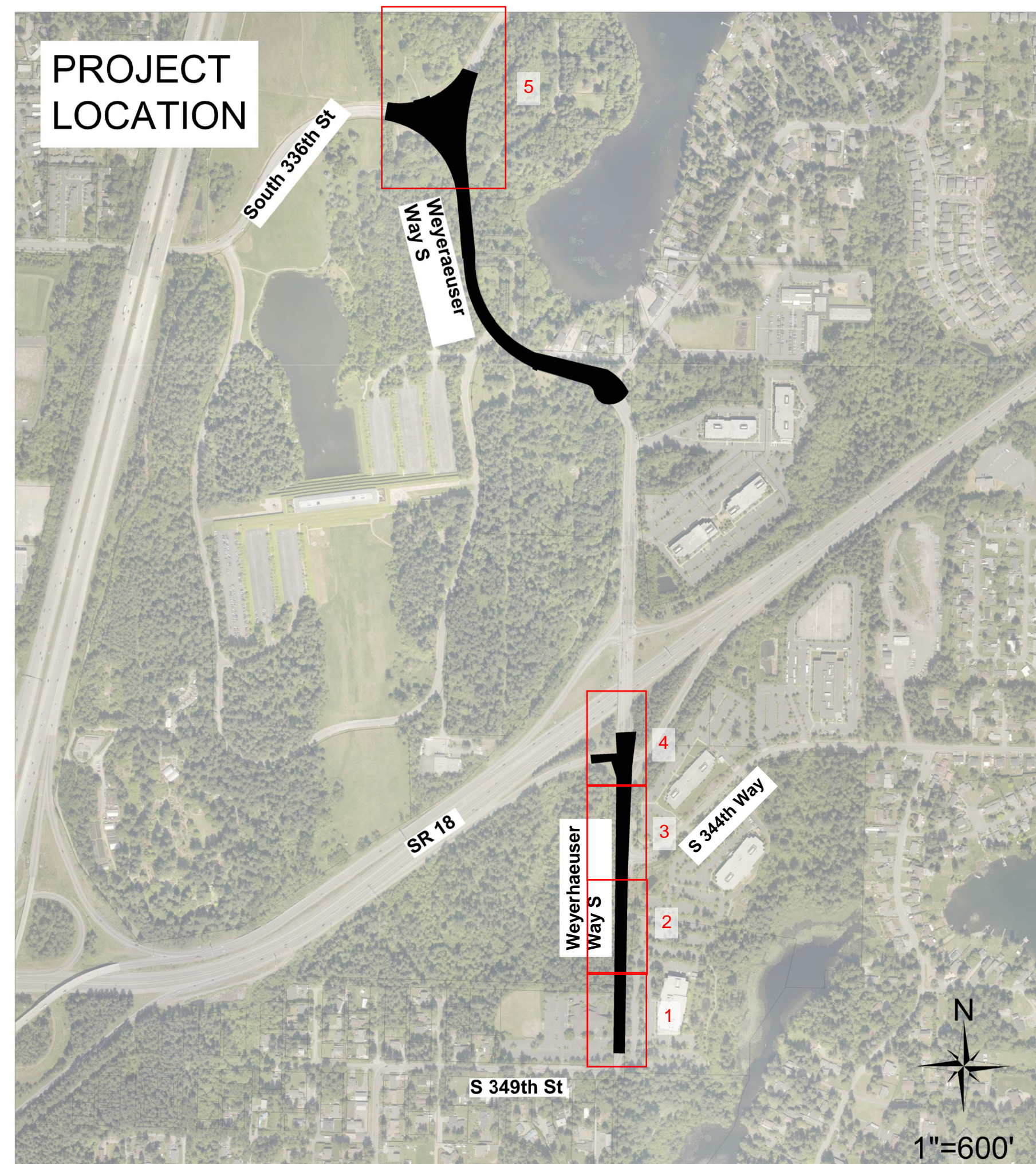


MAJOR ASPHALT PATCHING - 2026

CITY PROJECT #: 10126

Dig-
Out
Sheet
#



DRAWING VERSION / REVISION LOG		
NO.	DATE	REVISION

CHANNELIZATION DEVICE SPACING (feet)		
MPH	TAPER	TANGENT
50/70	40	80
35/45	30	60
25/30	20	40

MINIMUM LANE CLOSURE TAPER LENGTH = L (feet)										
LANE WIDTH (feet)	Posted Speed (mph)									
	25	30	35	40	45	50	55	60	65	70
10	105	150	205	270	450	500	550	-	-	-
11	115	165	225	295	495	550	605	660	-	-
12	125	180	245	320	540	600	660	720	780	840

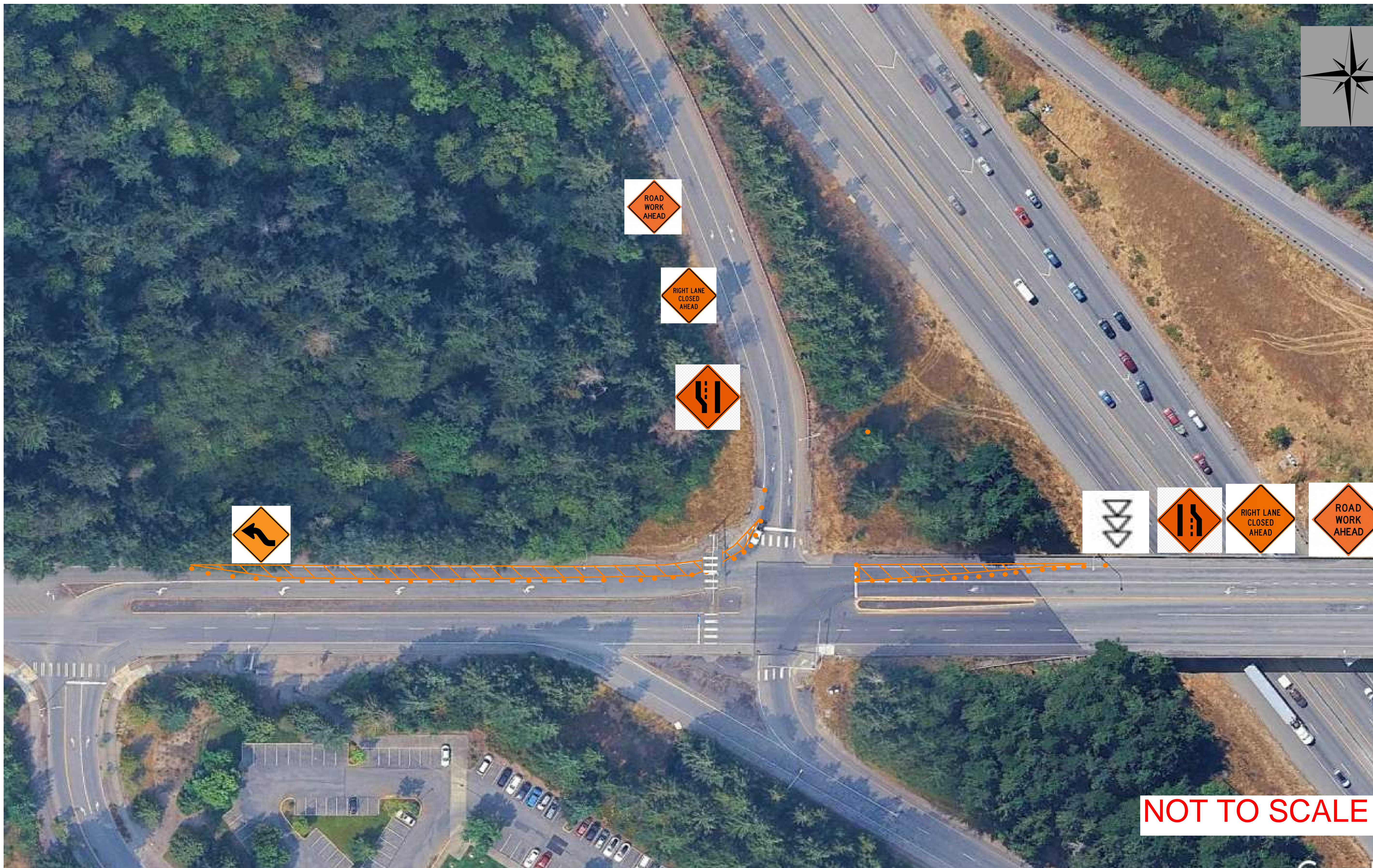
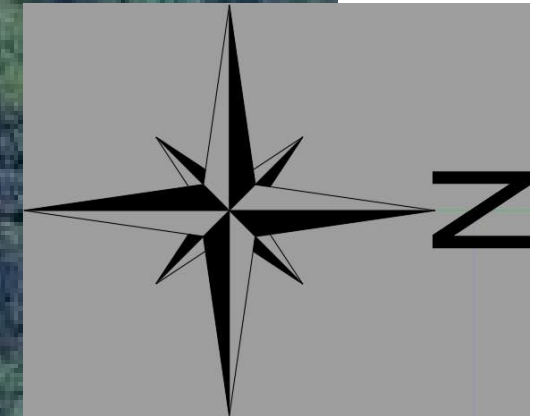
MINIMUM LANE CLOSURE TAPER LENGTH = L (feet)										
LANE WIDTH (feet)	Posted Speed (mph)									
	25	30	35	40	45	50	55	60	65	70
10	105	150	205	270	450	500	550	-	-	-
11	115	165	225	295	495	550	605	660	-	-
12	125	180	245	320	540	600	660	720	780	840

MINIMUM SHOULDER TAPER LENGTH = L/3 (feet)										
SHOULDER WIDTH (feet)	Posted Speed (mph)									
	25	30	35	40	45	50	55	60	65	70
8'	40	40	60	90	120	130	150	160	170	190
10'	40	60	90	90	150	170	190	200	220	240

USE A MINIMUM 3 DEVICES TAPER FOR SHOULDER LESS THEN 8'.

L:\DEPT\PM\3DP BASE-1.dwg 6/8/2026 2:22 PM

NO.	DATE	REVISION



NOT TO SCALE

L:\DEPT\WC3DIP BASE-1.dwg 6/8/2026 2:22 PM



33325 8th Avenue South
Federal Way, WA 98003-6325
(253) 835-2700
www.cityoffederalway.com



DRAFTED: S.HANGES
DESIGNED: P.MICHAELS
REVIEWED: D.WINKLER
APPROVED: D.WINKLER



DRAWING VERSION / REVISION LOG		
NO.	DATE	REVISION

WEYERHAEUSER WAY - MAJOR ASPHALT PATCHING

TRAFFIC CONTROL PLAN - LEFT LANE CLOSURE

CITY PROJECT #: 10126
SHT. 3
OF 10



NOT TO SCALE

TRAFFIC CONTROL FOR SHEETS 4 AND 5 ONLY APPLICABLE TO CLOSURE OF BOTH SOUTHBOUND WEYERHAEUSER LANES FROM SR 18 OFFRAMP

L:\DEPT\WC3DP BASE-1.dwg 6/8/2026 2:22 PM



33325 8th Avenue South
Federal Way, WA 98003-6325
(253) 835-2700
www.cityoffederalway.com



DRAFTED: S.HANGES
DESIGNED: P.MICHAELS
REVIEWED: D.WINKLER
APPROVED: D.WINKLER



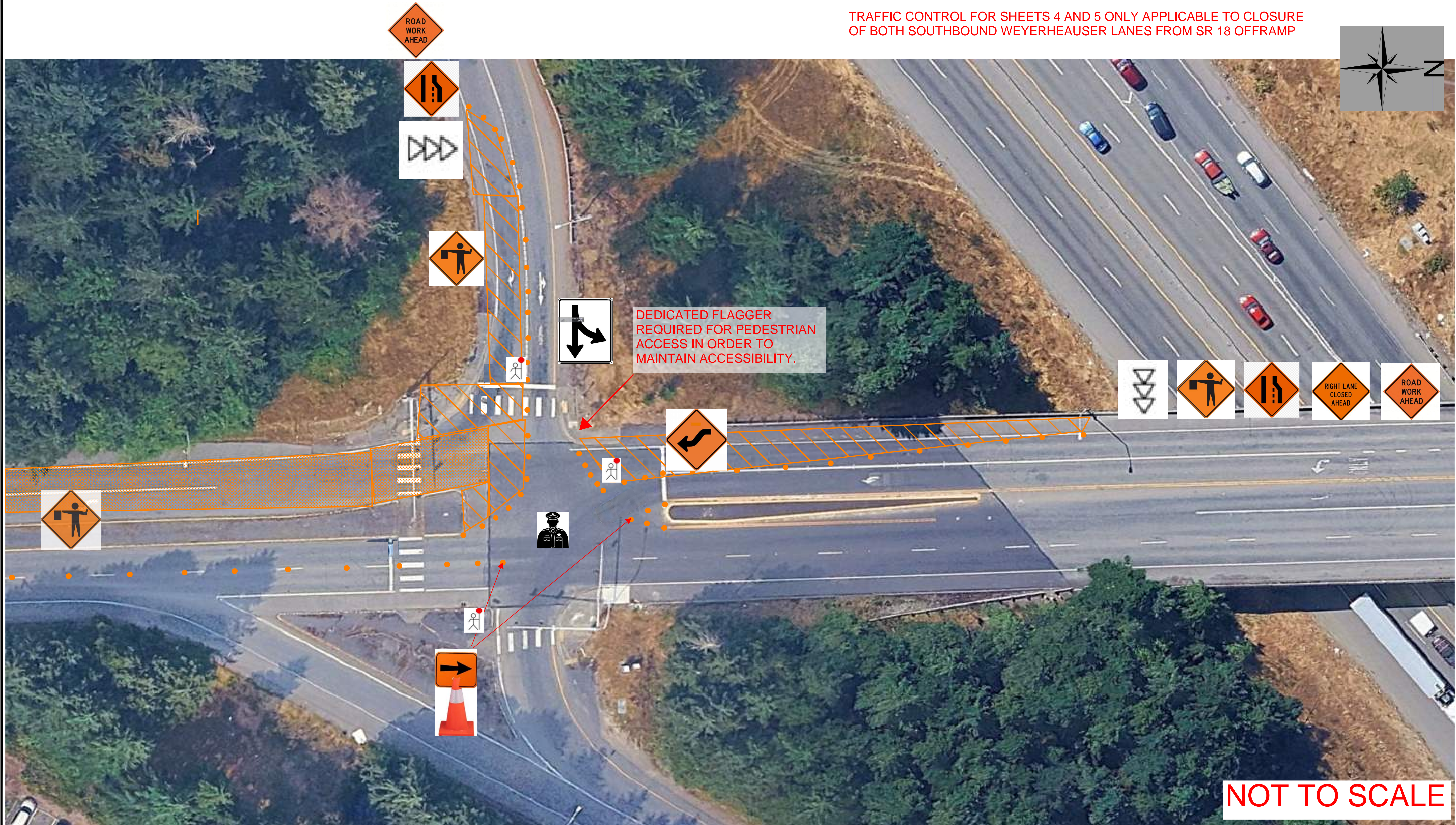
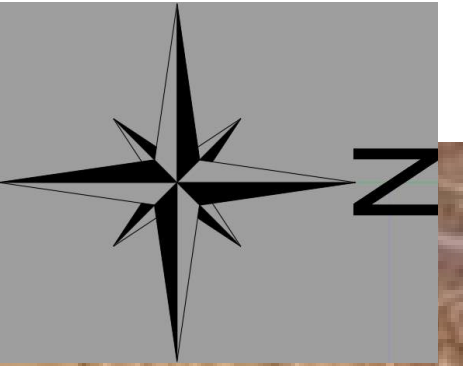
DRAWING VERSION / REVISION LOG		
NO.	DATE	REVISION

WEYERHAEUSER WAY - MAJOR ASPHALT PATCHING

TRAFFIC CONTROL PLAN - SOUTHBOUND WEYERHAEUSER AT SR 18 EASTBOUND OFFRAMP - SHEET 1 of 2

CITY PROJECT #:
10126
SHT. 4
OF 10

TRAFFIC CONTROL FOR SHEETS 4 AND 5 ONLY APPLICABLE TO CLOSURE OF BOTH SOUTHBOUND WEYERHAEUSER LANES FROM SR 18 OFFRAMP



NOT TO SCALE

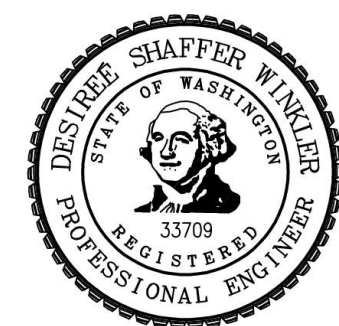
L:\DEPT\WC3DP BASE-1.dwg 6/8/2026 2:22 PM



33325 8th Avenue South
Federal Way, WA 98003-6325
(253) 835-2700
www.cityoffederalway.com



DRAFTED: S.HANGES
DESIGNED: P.MICHAELS
REVIEWED: D.WINKLER
APPROVED: D.WINKLER



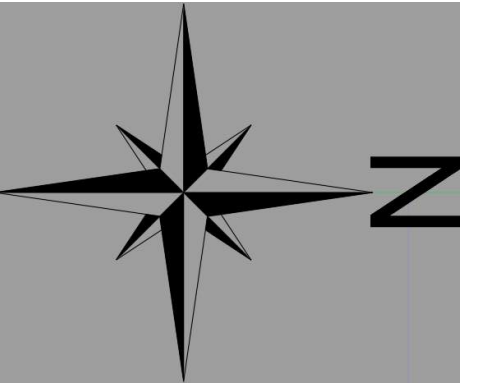
DRAWING VERSION / REVISION LOG

NO.	DATE	REVISION

WEYERHAEUSER WAY - MAJOR ASPHALT PATCHING

TRAFFIC CONTROL PLAN - SOUTHBOUND WEYERHAEUSER
AT SR 18 EASTBOUND OFFRAMP - SHEET 2 of 2

CITY PROJECT #:
10126
SHT. 5
OF 10

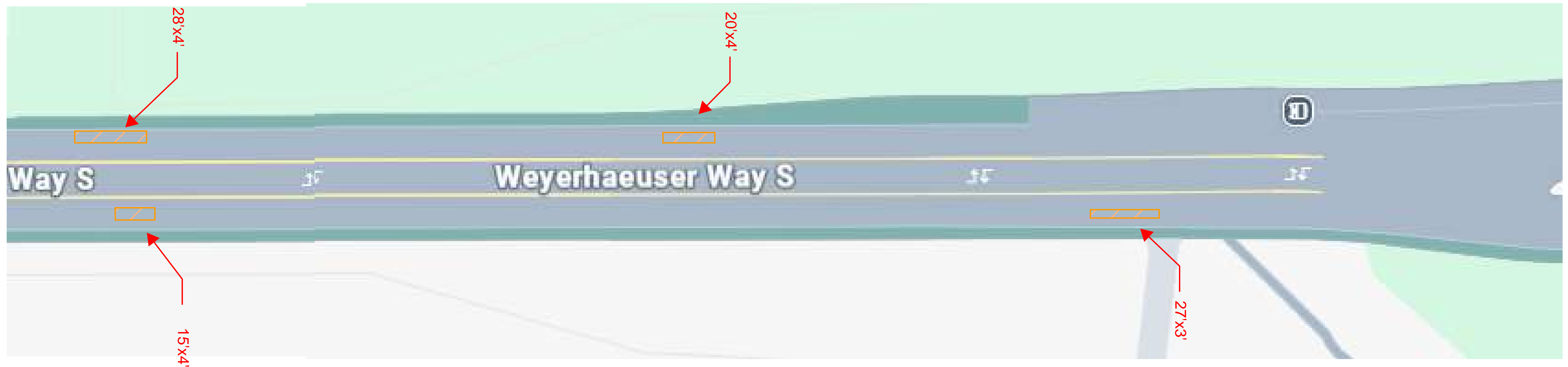
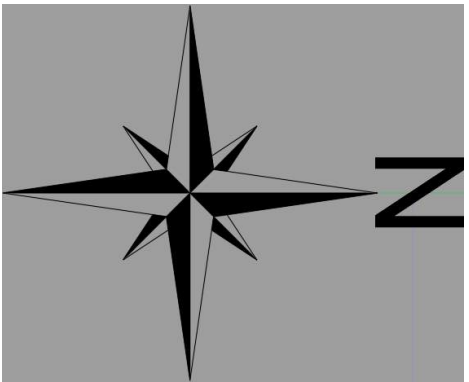


ALL PAVEMENT REPAIR DEPTHS AND HMA DEPTHS ARE 6"

NOT TO SCALE

L:\DEPT\PM\3DIP BASE-1.dwg 6/8/2026 2:22 PM

DRAWING VERSION / REVISION LOG		
NO.	DATE	REVISION



ALL PAVEMENT REPAIR DEPTHS AND HMA DEPTHS ARE 6"

NOT TO SCALE

L:\DEPT\PM\3DP BASE-1.dwg 6/8/2026 2:22 PM

CITY OF Federal Way
Centered on Opportunity

33325 8th Avenue South
Federal Way, WA 98003-6325

(253) 835-2700
www.cityoffederalway.com



DRAFTED: S.HANGES
DESIGNED: P.MICHAELS
REVIEWED: D.WINKLER
APPROVED: D.WINKLER



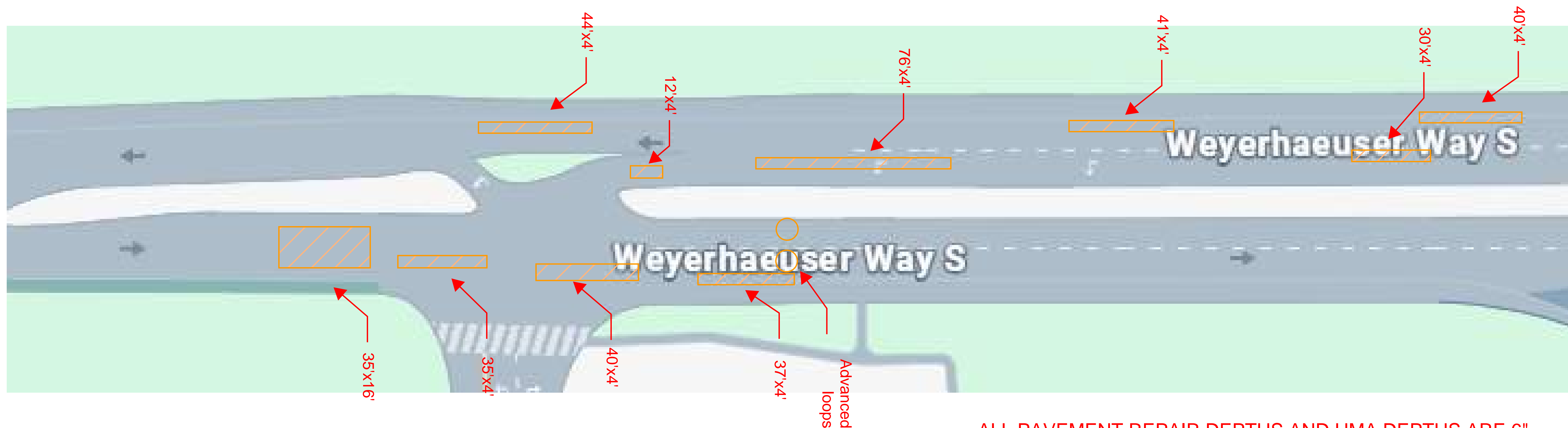
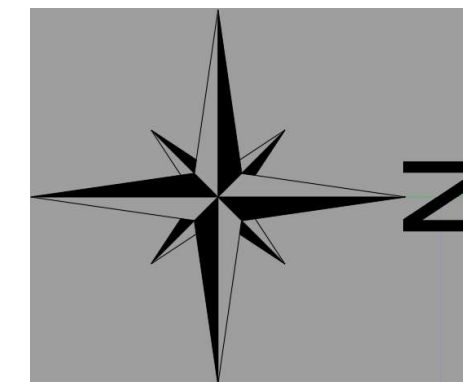
DRAWING VERSION / REVISION LOG		
NO.	DATE	REVISION

WEYERHAEUSER WAY - MAJOR ASPHALT PATCHING

DIG-OUTS
PAGE 2

CITY PROJECT #:
10126

SHT. 7
OF 10



ALL PAVEMENT REPAIR DEPTHS AND HMA DEPTHS ARE 6"

NOT TO SCALE

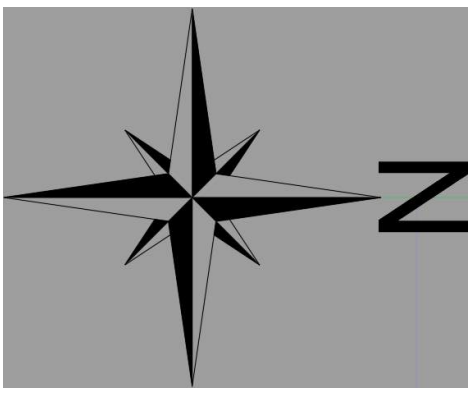
L:\DEPT\PM\3DIP BASE-1.dwg 6/8/2026 2:22 PM

DRAWING VERSION / REVISION LOG

NO.	DATE	REVISION

WEYERHAEUSER WAY - MAJOR ASPHALT PATCHING

DIG-OUTS
PAGE 3



ALL PAVEMENT REPAIR DEPTHS AND HMA DEPTHS ARE 6"

NOT TO SCALE

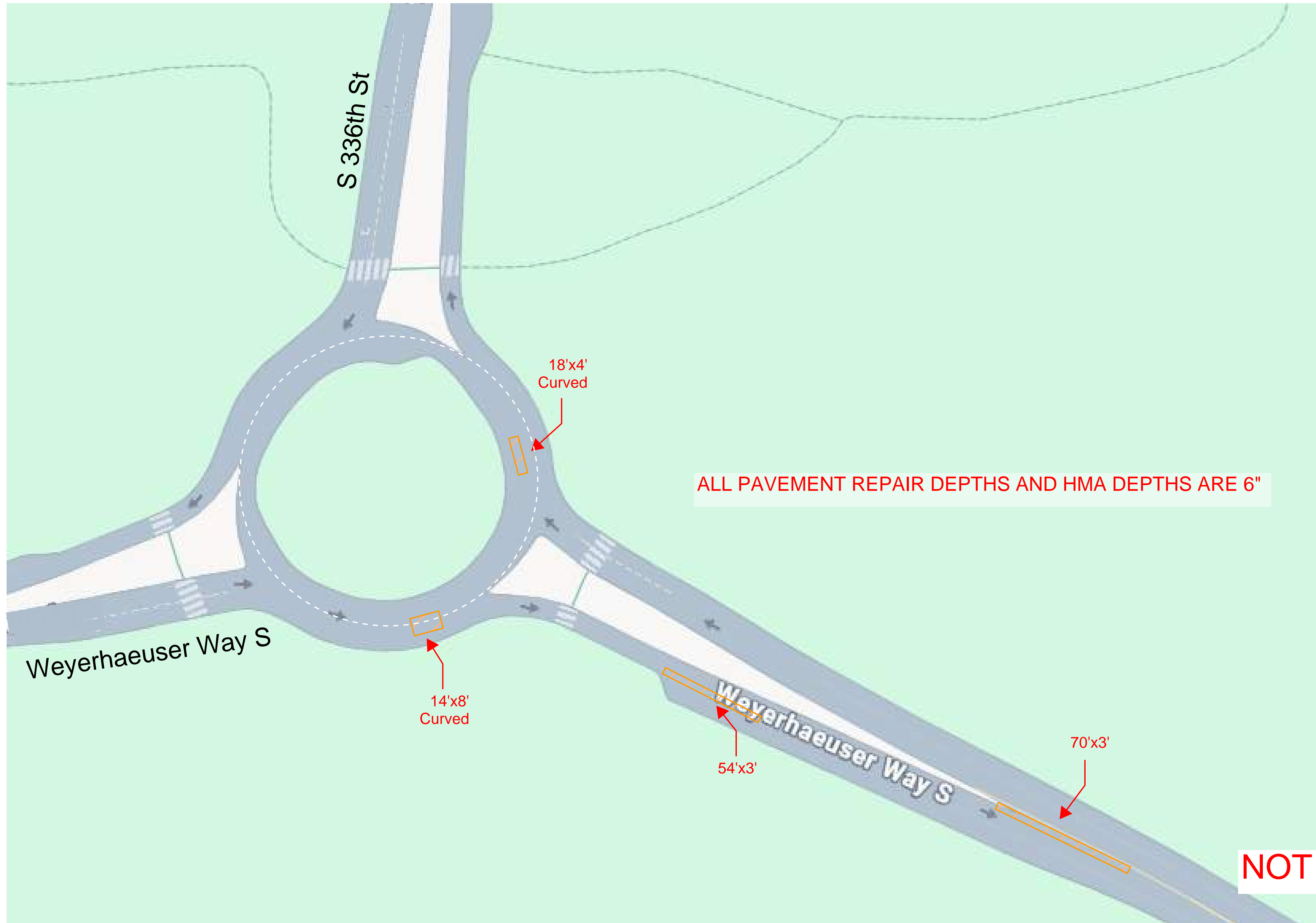
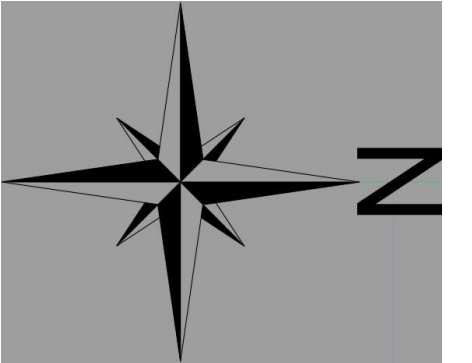
L:\DEPT\PM\3DP BASE-1.dwg 6/8/2026 2:22 PM

DRAWING VERSION / REVISION LOG

NO.	DATE	REVISION

WEYERHAEUSER WAY - MAJOR ASPHALT PATCHING

DIG-OUTS
PAGE 4



ALL PAVEMENT REPAIR DEPTHS AND HMA DEPTHS ARE 6"

NOT TO SCALE

L:\DEPT\PM\3D\DP BASE-1.dwg 6/8/2026 2:22 PM



33325 8th Avenue South
Federal Way, WA 98003-6325
(253) 835-2700
www.cityoffederalway.com



DRAFTED: S.HANGES
DESIGNED: P.MICHAELS
REVIEWED: D.WINKLER
APPROVED: D.WINKLER



DRAWING VERSION / REVISION LOG

NO.	DATE	REVISION

WEYERHAEUSER WAY - MAJOR ASPHALT PATCHING

DIG-OUTS
PAGE 5

CITY PROJECT #:
10126
SHT. 10
OF 10

MINIMUM LANE CLOSURE TAPER LENGTH = L (feet)										
LANE WIDTH (feet)	Posted Speed (mph)									
	25	30	35	40	45	50	55	60	65	70
10	105	150	205	270	450	500	550	-	-	-
11	115	165	225	295	495	550	605	660	-	-
12	125	180	245	320	540	600	660	720	780	840

MINIMUM SHOULDER TAPER LENGTH = L/3 (feet)										
SHOULDER WIDTH (feet)	Posted Speed (mph)									
	25	30	35	40	45	50	55	60	65	70
8'	40	40	60	90	120	130	150	160	170	190
10'	40	60	90	90	150	170	190	200	220	240

USE A MINIMUM 3 DEVICES TAPER FOR SHOULDER LESS THEN 8'.

SIGN SPACING = X (1)		
FREEWAYS & EXPRESSWAYS	55 / 70 MPH	1500' ±
RURAL HIGHWAYS	60 / 65 MPH	800' ±
RURAL ROADS	45 / 55 MPH	500' ±
RURAL ROADS & URBAN ARTERIALS	35 / 40 MPH	350' ±
RURAL ROADS & URBAN ARTERIALS	25 / 30 MPH	200' ± (2)
RESIDENTIAL & BUSINESS DISTRICTS		
URBAN STREETS	25 MPH OR LESS	100' ± (2)

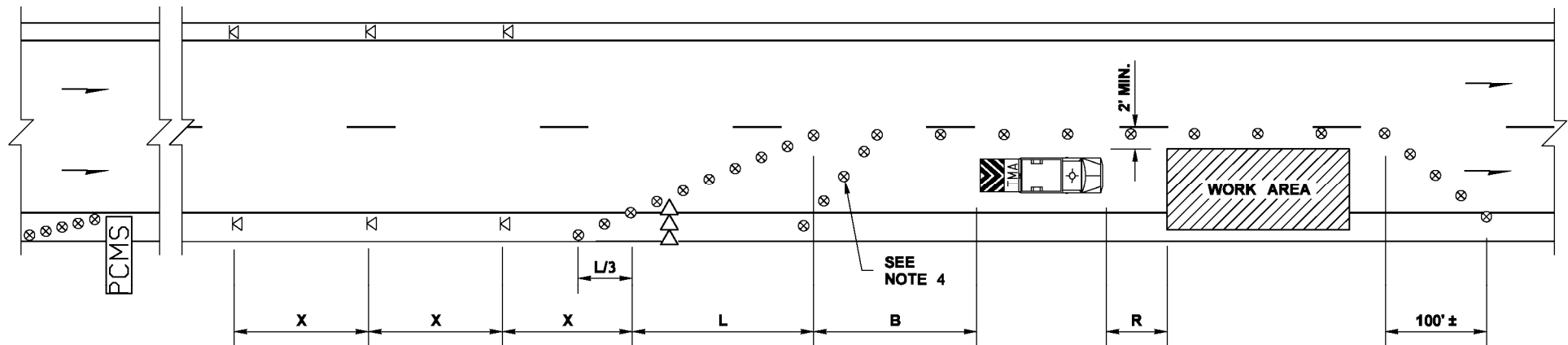
(1) ALL SPACING MAY BE ADJUSTED TO ACCOMMODATE INTERCHANGE RAMP, AT-GRADE INTERSECTIONS AND DRIVEWAYS.
(2) THIS SPACING MAY BE REDUCED IN URBAN AREAS TO FIT ROADWAY CONDITIONS.

CHANNELIZATION DEVICE SPACING (feet)		
MPH	TAPER	TANGENT
50/70	40	80
35/45	30	60
25/30	20	40

BUFFER DATA										
LONGITUDINAL BUFFER SPACE = B										
	25	30	35	40	45	50	55	60	65	70
LENGTH (feet)	155	200	250	305	360	425	495	570	645	730

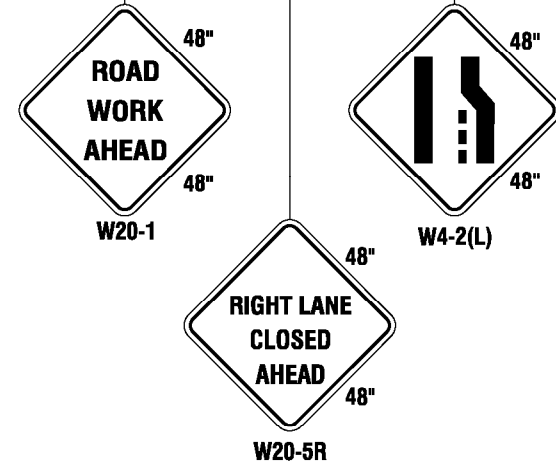
BUFFER VEHICLE ROLL AHEAD DISTANCE = R

TRANSPORTABLE ATTENUATOR	30 FEET MIN. TO 100 FEET MAX.
MINIMUM HOST VEHICLE WEIGHT 15,000 LBS. THE MAXIMUM WEIGHT SHALL BE IN ACCORDANCE WITH THE MANUFACTURERS RECOMMENDATION.	



PCMS	
1	2
RIGHT LANE CLOSURE	1 MILE AHEAD
2.0 SEC	2.0 SEC

FIELD LOCATE 1 MILE ± IN ADVANCE OF LANE CLOSURE SIGNING.



- LEGEND**
- ⊠ TEMPORARY SIGN LOCATION
 - ⊗ TRAFFIC SAFETY DRUM
 - ⇨⇨ SEQUENTIAL ARROW SIGN
 - ▶▶ TRANSPORTABLE ATTENUATOR
 - PCMS PORTABLE CHANGEABLE MESSAGE SIGN

SINGLE-LANE CLOSURE FOR MULTI-LANE ROADWAYS

NOT TO SCALE

- NOTES:**
- SEE SPECIAL PROVISIONS FOR WORK HOUR RESTRICTIONS.
 - EXTEND DEVICE TAPER AT L/3 ACROSS SHOULDER.
 - DEVICES SHALL NOT ENCROACH INTO THE ADJACENT LANE.
 - USE TRANSVERSE DEVICES IN CLOSED LANE EVERY 1000' (FT) (RECOMMENDED).
 - DEVICE SPACING FOR THE DOWNSTREAM TAPER SHALL BE 20' (FT).
 - ALL SIGNS ARE BLACK ON ORANGE.

FILE NAME	S:\Design R P& S\4-Standards\2-Plan Sheet Library\01-Published PSL(TC) Work Zone Traffic Control\W(TC-3) Single-Lane Closure for Multi-Lane Roadways\TC-3.dgn					REGION NO.	STATE	FED.AID PROJ.NO.		Plot 1
TIME	1:18:08 PM									PLAN REF NO
DATE	9/18/2014						WASH			TC3
PLOTTED BY	FletcCo									SHEET
DESIGNED BY										OF
ENTERED BY										SHEETS
CHECKED BY										
PROJ. ENGR.										
REGIONAL ADM.	REVISION	DATE	BY			CONTRACT NO.	LOCATION NO.			TRAFFIC CONTROL PLAN



TRAFFIC CONTROL PLAN

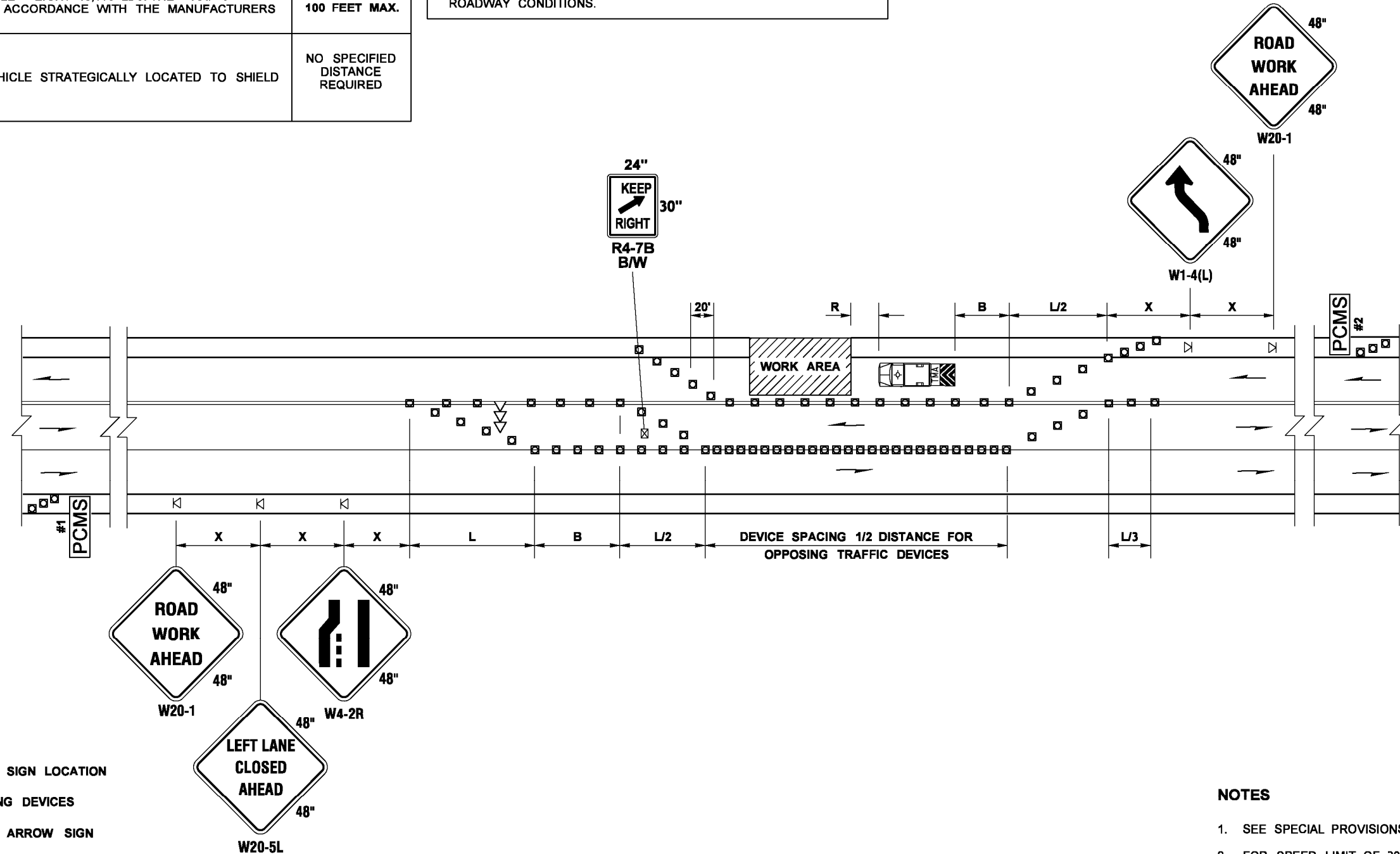
BUFFER DATA										
LONGITUDINAL BUFFER SPACE = B										
SPEED (MPH)	25	30	35	40	45	50	55	60	65	70
LENGTH (feet)	155	200	250	305	360	425	495	570	645	-
BUFFER VEHICLE ROLL AHEAD DISTANCE = R										
TRANSPORTABLE ATTENUATOR MINIMUM HOST VEHICLE WEIGHT 15,000 LBS. THE MAXIMUM WEIGHT SHALL BE IN ACCORDANCE WITH THE MANUFACTURERS RECOMMENDATION.									30 FEET MIN. TO 100 FEET MAX.	
PROTECTIVE VEHICLE MAY BE A WORK VEHICLE STRATEGICALLY LOCATED TO SHIELD THE WORK AREA.									NO SPECIFIED DISTANCE REQUIRED	

SIGN SPACING = X (1)		
RURAL HIGHWAYS	60 / 65 MPH	800' ±
RURAL ROADS	45 / 55 MPH	500' ±
RURAL ROADS & URBAN ARTERIALS	35 / 40 MPH	350' ±
RURAL ROADS & URBAN ARTERIALS RESIDENTIAL & BUSINESS DISTRICTS	25 / 30 MPH	200' ± (2)
URBAN STREETS	25 MPH OR LESS	100' ± (2)

(1) ALL SPACING MAY BE ADJUSTED TO ACCOMMODATE INTERCHANGE RAMP, AT-GRADE INTERSECTIONS AND DRIVEWAYS.
(2) THIS SPACING MAY BE REDUCED IN URBAN AREAS TO FIT ROADWAY CONDITIONS.

MINIMUM TAPER LENGTH = L (feet)										
LANE WIDTH (feet)	Posted Speed (mph)									
		25	30	35	40	45	50	55	60	65
10	105	150	205	270	450	500	550	-	-	-
11	115	165	225	295	495	550	605	660	-	-
12	125	180	245	320	540	600	660	720	780	-

CHANNELIZATION DEVICE SPACING (feet)		
MPH	TAPER	TANGENT
50/60	40	80
35/45	30	60
25/30	20	40



PCMS #1	
1	2
LEFT LANE CLOSURE	1 MILE AHEAD
2.0 SEC	2.0 SEC

FIELD LOCATE IN ADVANCE OF TEMPORARY SIGNS.

PCMS #2	
1	2
LANE SHIFTS LEFT	1 MILE AHEAD
2.0 SEC	2.0 SEC

FIELD LOCATE IN ADVANCE OF TEMPORARY SIGNS.

LEGEND

- ⊠ TEMPORARY SIGN LOCATION
- ⊞ CHANNELIZING DEVICES
- ⇨⇨⇨ SEQUENTIAL ARROW SIGN
- ⊞ TRANSPORTABLE ATTENUATOR
- PCMS PORTABLE CHANGEABLE MESSAGE SIGN
- ⊞ TEMPORARY SIGN LOCATION (5' MOUNTING HEIGHT)

NOTES

- SEE SPECIAL PROVISIONS FOR WORK HOUR RESTRICTIONS.
- FOR SPEED LIMIT OF 30 MPH OR LESS, USE SIGN W1-3 IN LIEU OF SIGN W1-4.
- RECOMMENDED EXTENDING DEVICE TAPER (L/3) ACROSS SHOULDER.
- ALL SIGNS ARE BLACK ON ORANGE UNLESS OTHERWISE DESIGNATED.

LANE SHIFT - THREE LANE ROADWAY

NOT TO SCALE

FILE NAME	S:\Design R P& S\4-Standards\2-Plan Sheet Library\01-Published PSL(TC) Work Zone Traffic Control\W(TC-12) Lane Shift - Three Lane Roadway\TC-12.dgn					REGION NO.	STATE	FED.AID PROJ.NO.	Washington State Department of Transportation	Plot 1
TIME	1:26:06 PM					NO.	WASH			PLAN REF NO
DATE	9/18/2014					JOB NUMBER			TRAFFIC CONTROL PLAN	SHEET
PLOTTED BY	FletcCo					CONTRACT NO.		LOCATION NO.		OF
DESIGNED BY										SHEETS
ENTERED BY										
CHECKED BY										
PROJ. ENGR.										
REGIONAL ADM.	REVISION	DATE	BY							

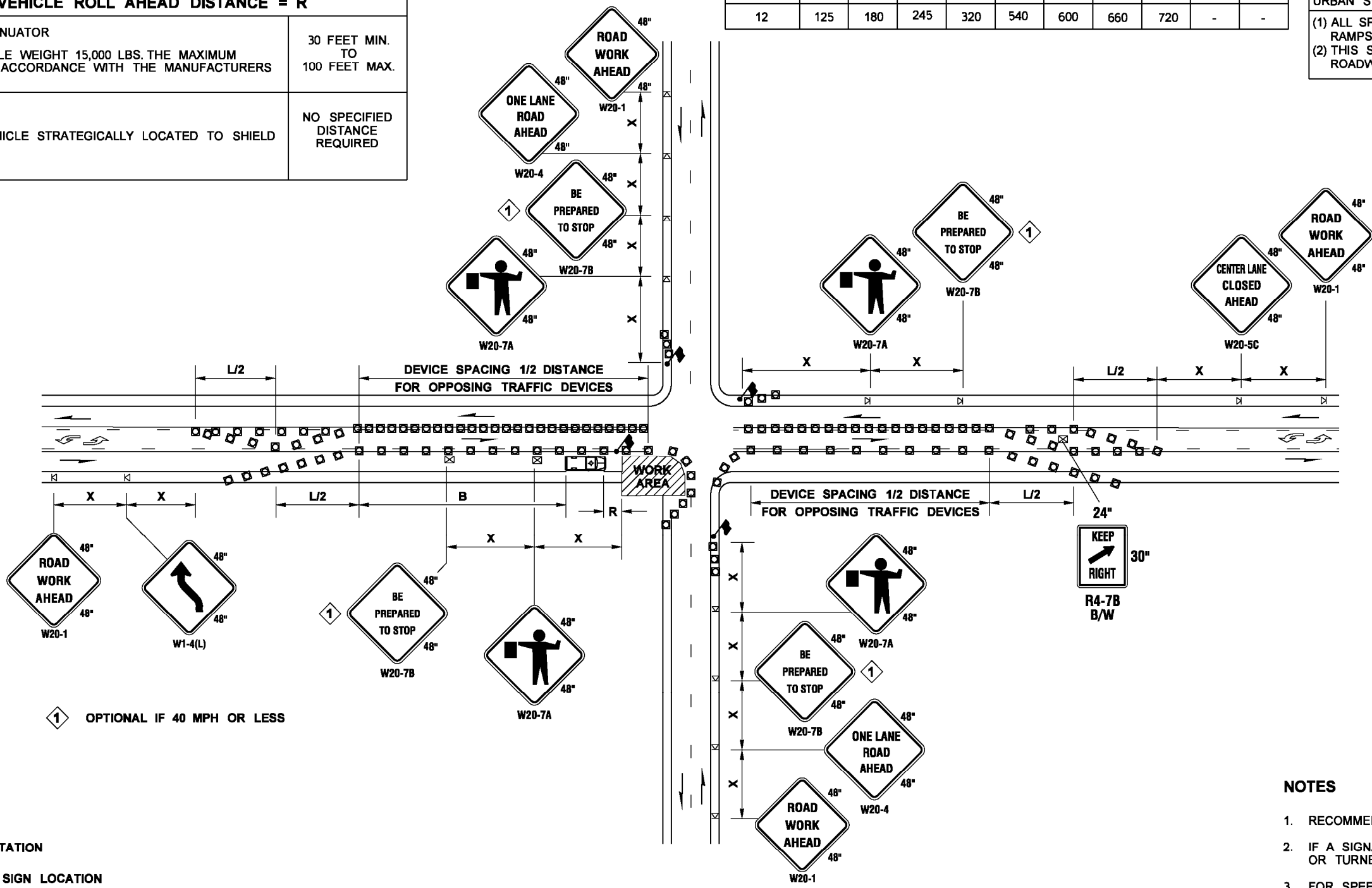
BUFFER DATA										
LONGITUDINAL BUFFER SPACE = B										
SPEED (MPH)	25	30	35	40	45	50	55	60	65	70
LENGTH (feet)	155	200	250	305	360	425	495	570	645	-
BUFFER VEHICLE ROLL AHEAD DISTANCE = R										
TRANSPORTABLE ATTENUATOR MINIMUM HOST VEHICLE WEIGHT 15,000 LBS. THE MAXIMUM WEIGHT SHALL BE IN ACCORDANCE WITH THE MANUFACTURERS RECOMMENDATION.								30 FEET MIN. TO 100 FEET MAX.		
PROTECTIVE VEHICLE MAY BE A WORK VEHICLE STRATEGICALLY LOCATED TO SHIELD THE WORK AREA.								NO SPECIFIED DISTANCE REQUIRED		

LANE WIDTH (feet)	MINIMUM TAPER LENGTH = L (feet)									
	Posted Speed (mph)									
	25	30	35	40	45	50	55	60	65	70
10	105	150	205	270	450	500	550	-	-	-
11	115	165	225	295	495	550	605	660	-	-
12	125	180	245	320	540	600	660	720	-	-

SIGN SPACING = X (1)		
RURAL HIGHWAYS	60 / 65 MPH	800' ±
RURAL ROADS	45 / 55 MPH	500' ±
RURAL ROADS & URBAN ARTERIALS	35 / 40 MPH	350' ±
RURAL ROADS & URBAN ARTERIALS	25 / 30 MPH	200' ± (2)
RESIDENTIAL & BUSINESS DISTRICTS		
URBAN STREETS	25 MPH OR LESS	100' ± (2)

(1) ALL SPACING MAY BE ADJUSTED TO ACCOMMODATE INTERCHANGE RAMP, AT-GRADE INTERSECTIONS AND DRIVEWAYS.
(2) THIS SPACING MAY BE REDUCED IN URBAN AREAS TO FIT ROADWAY CONDITIONS.

CHANNELIZATION DEVICE SPACING (feet)		
MPH	TAPER	TANGENT
50/70	40	80
35/45	30	60
25/30	20	40



1 OPTIONAL IF 40 MPH OR LESS

- LEGEND**
- FLAGGING STATION
 - TEMPORARY SIGN LOCATION
 - CHANNELIZING DEVICES
 - PROTECTIVE VEHICLE - RECOMMENDED
 - TEMPORARY SIGN LOCATION (5' MOUNTING HEIGHT)

INTERSECTION LANE CLOSURE ~ THREE LANE ROADWAY

NOT TO SCALE

- NOTES**
- RECOMMEND EXTENDING DEVICE TAPER (L/3) ACROSS SHOULDER.
 - IF A SIGNAL IS PRESENT, IT SHALL BE SET TO "RED FLASH MODE" OR TURNED OFF DURING FLAGGING OPERATIONS.
 - FOR SPEED LIMIT OF 30 MPH OR LESS USE SIGN W1-3 IN LIEU OF SIGN W1-4.
 - MAINTAIN A MINIMUM OF ONE ACCESS POINT FOR EACH BUSINESS WITHIN WORK AREA LIMITS.
 - ALL SIGNS ARE BLACK ON ORANGE UNLESS OTHERWISE DESIGNATED.

FILE NAME	S:\Design R P& S\4-Standards\2-Plan Sheet Library\01-Published PSL(TC) Work Zone Traffic Control\W(TC-14) Intersection Lane Closure - Three Lane Roadway\TC-14.dgn										Plot 1
TIME	1:27:17 PM										PLAN REF NO
DATE	9/18/2014										TC14
PLOTTED BY	FletcCo										SHEET
DESIGNED BY											
ENTERED BY											OF
CHECKED BY											
PROJ. ENGR.											TRAFFIC CONTROL PLAN
REGIONAL ADM.											
REVISION	DATE	BY	REGION NO.	STATE	FED.AID PROJ.NO.	CONTRACT NO.	LOCATION NO.	DATE	P.E. STAMP BOX	DATE	P.E. STAMP BOX
				WASH							



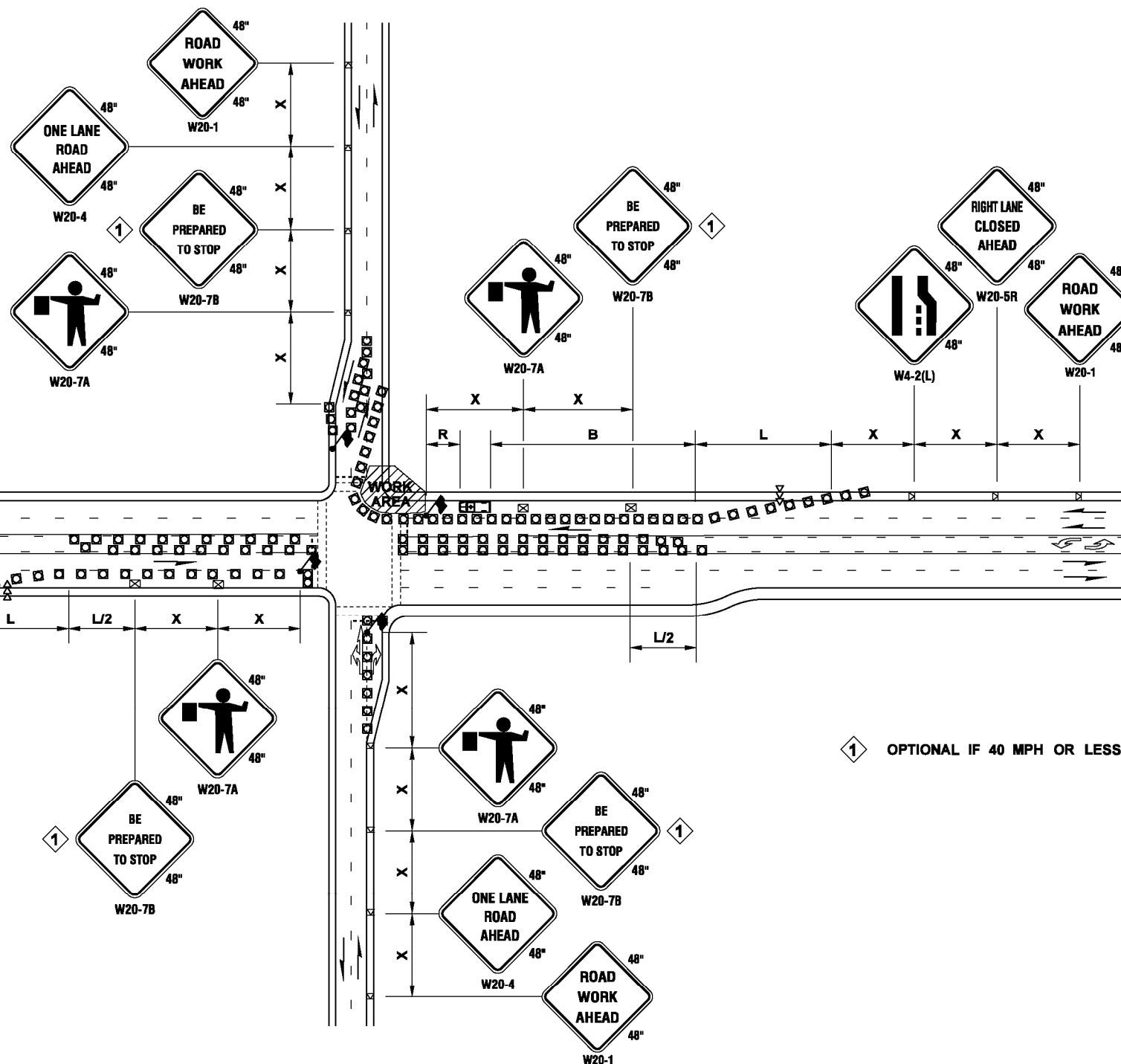
CHANNELIZATION DEVICE SPACING (feet)		
MPH	TAPER	TANGENT
50/70	40	80
35/45	30	60
25/30	20	40

BUFFER DATA										
LONGITUDINAL BUFFER SPACE = B										
SPEED (MPH)	25	30	35	40	45	50	55	60	65	70
LENGTH (feet)	155	200	250	305	360	425	495	570	645	-
BUFFER VEHICLE ROLL AHEAD DISTANCE = R										
TRANSPORTABLE ATTENUATOR MINIMUM HOST VEHICLE WEIGHT 15,000 LBS. THE MAXIMUM WEIGHT SHALL BE IN ACCORDANCE WITH THE MANUFACTURERS RECOMMENDATION.									30 FEET MIN. TO 100 FEET MAX.	
PROTECTIVE VEHICLE MAY BE A WORK VEHICLE STRATEGICALLY LOCATED TO SHIELD THE WORK AREA.									NO SPECIFIED DISTANCE REQUIRED	

MINIMUM TAPER LENGTH = L (feet)										
LANE WIDTH (feet)	Posted Speed (mph)									
	25	30	35	40	45	50	55	60	65	70
10	105	150	205	270	450	500	550	-	-	-
11	115	165	225	295	495	550	605	660	-	-
12	125	180	245	320	540	600	660	720	-	-

SIGN SPACING = X (1)		
RURAL HIGHWAYS	60 / 65 MPH	800' ±
RURAL ROADS	45 / 55 MPH	500' ±
RURAL ROADS & URBAN ARTERIALS	35 / 40 MPH	350' ±
RURAL ROADS & URBAN ARTERIALS RESIDENTIAL & BUSINESS DISTRICTS	25 / 30 MPH	200' ± (2)
URBAN STREETS	25 MPH OR LESS	100' ± (2)

(1) ALL SPACING MAY BE ADJUSTED TO ACCOMMODATE INTERCHANGE RAMP, AT-GRADE INTERSECTIONS AND DRIVEWAYS.
(2) THIS SPACING MAY BE REDUCED IN URBAN AREAS TO FIT ROADWAY CONDITIONS.



1 OPTIONAL IF 40 MPH OR LESS

LEGEND

- FLAGGING STATION
- TEMPORARY SIGN LOCATION
- CHANNELIZING DEVICES
- SEQUENTIAL ARROW SIGN
- PROTECTIVE VEHICLE - RECOMMENDED
- TEMPORARY SIGN LOCATION (5' MOUNTING HEIGHT)

INTERSECTION LANE CLOSURE ~ FIVE LANE ROADWAY

NOT TO SCALE

NOTES

1. RECOMMEND EXTENDING DEVICE TAPER (L/3) ACROSS SHOULDER.
2. IF A SIGNAL IS PRESENT, IT SHALL BE SET TO "RED FLASH MODE" OR TURNED OFF DURING FLAGGING OPERATIONS.
3. MAINTAIN A MINIMUM OF ONE ACCESS POINT FOR EACH BUSINESS WITHIN WORK AREA LIMITS.
4. ALL SIGNS ARE BLACK ON ORANGE.

FILE NAME	S:\Design R P& S\4-Standards\2-Plan Sheet Library\01-Published PSL(TC) Work Zone Traffic Control\W(TC-15) Intersection Lane Closure - Five Lane Roadway\TC-15.dgn									
TIME	1:27:49 PM									
DATE	9/18/2014									
PLOTTED BY	FletcCo									
DESIGNED BY										
ENTERED BY										
CHECKED BY										
PROJ. ENGR.										
REGIONAL ADM.										
REVISION										
DATE										
BY										
REGION NO.	STATE									
	FED.AID PROJ.NO.									
	WASH									
	JOB NUMBER									
	CONTRACT NO.									
	LOCATION NO.									
	DATE									
	DATE									
	P.E. STAMP BOX									
	P.E. STAMP BOX									
<p>Washington State Department of Transportation</p>										Plot 1 PLAN REF NO TC15 SHEET OF SHEETS
TRAFFIC CONTROL PLAN										