

Centre Pointe Consultants  
 14209 29th Ave. S., #105  
 Sumner, WA 98390  
 253-813-1901  
 Tuesday, May 12, 2020 7:29:44 AM

RESUBMITTED

Jun 09 2020

CITY OF FEDERAL WAY  
 COMMUNITY DEVELOPMENT

NEW PROJECT

PROJECT: D:\2371\2371.pro

CLOSURE REPORT

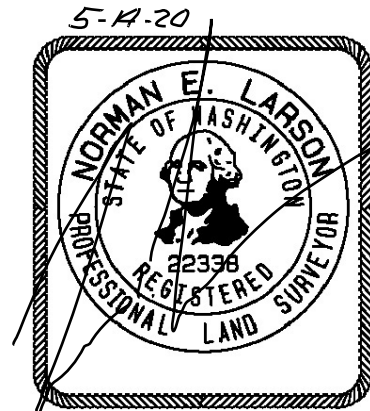
Coordinate values shown are computed based on the rounded bearing and distance,  
 or chord bearing and chord lengths as indicated herein.

Boundary Name: OVERALL

Point Number	Description	Chainage	Northing	Easting	Elevation
Bearing	Distance				
227	Calc pt Alde	0+00.00	4982.51346	5597.47002	
Calc pt Alde					
S89°30'43"E	101.41 '				
1016		1+01.41	4981.64964	5698.87634	
S00°30'27"W	146.09 '				
1014		2+47.50	4835.56537	5697.58236	
N89°29'34"W	76.86 '				
1015		3+24.37	4836.24578	5620.72537	
N00°41'07"E	12.00 '				
1000	BLA COR	3+36.37	4848.24492	5620.86889	
BLA COR					
N89°29'34"W	25.00 '				
254	LOT	3+61.37	4848.46624	5595.86987	
LOT N00°41'07"E	134.06 '				
227	Calc pt Alde	4+95.43	4982.51665	5597.47324	
Calc pt Alde					

Closing latitude = 0.00319  
 Closing departure = 0.00322  
 Closing bearing = S45°14'52"W  
 Closing distance = 0.00453  
 Total traverse length = 495.42 (495.43)  
 Total error of closure = 1/109334  
 Error of closure in latitude = 1/155295  
 Error of closure in departure = 1/153958

Area = 14546.63 SQ FT  
 Area = 0.33 ACRES



Centre Pointe Consultants  
 14209 29th Ave. S., #105  
 Sumner, WA 98390  
 253-813-1901  
 Tuesday, May 12, 2020 7:29:44 AM

NEW PROJECT

PROJECT: D:\2371\2371.pro

CLOSURE REPORT

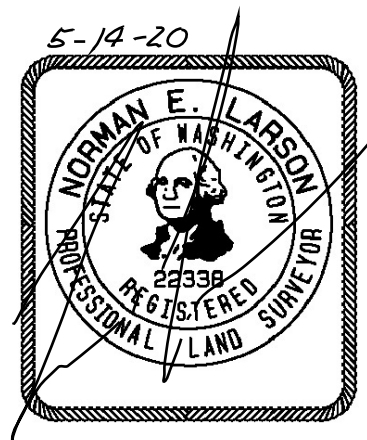
Coordinate values shown are computed based on the rounded bearing and distance,  
 or chord bearing and chord lengths as indicated herein.

Boundary Name: LOT 1

Point Number	Description	Chainage	Northing	Easting	Elevation
Bearing	Distance				
227	Calc pt Alde	0+00.00	4982.51346	5597.47002	
Calc pt Alde					
S89°30'43"E	51.41 '				
1018		0+51.41	4982.07555	5648.87816	
S00°30'27"W	146.08 '				
1019		1+97.48	4836.00128	5647.58426	
N89°29'34"W	26.86 '				
1015		2+24.34	4836.23906	5620.72531	
N00°41'07"E	12.00 '				
1000	BLA COR	2+36.34	4848.23820	5620.86884	
BLA COR					
N89°29'34"W	25.00 '				
254	LOT	2+61.34	4848.45951	5595.86982	
LOT N00°41'07"E	134.06 '				
227	Calc pt Alde	3+95.40	4982.50992	5597.47318	
Calc pt Alde					

Closing latitude = -0.00354  
 Closing departure = 0.00316  
 Closing bearing = N41°47'58"W  
 Closing distance = 0.00474  
 Total traverse length = 395.41 (395.40)  
 Total error of closure = 1/83370  
 Error of closure in latitude = 1/111834  
 Error of closure in departure = 1/125082

Area = 7241.68 SQ FT  
 Area = 0.17 ACRES



Centre Pointe Consultants  
 14209 29th Ave. S., #105  
 Sumner, WA 98390  
 253-813-1901  
 Tuesday, May 12, 2020 7:29:44 AM

NEW PROJECT

PROJECT: D:\2371\2371.pro

CLOSURE REPORT

Coordinate values shown are computed based on the rounded bearing and distance, or chord bearing and chord lengths as indicated herein.

Boundary Name: LOT 2

Point Number	Description	Chainage	Northing	Easting	Elevation
Bearing	Distance				
1018		0+00.00	4982.07549	5648.87316	
S89°30'43"E	50.00 '				
1016		0+50.00	4981.64959	5698.87134	
S00°30'27"W	146.09 '				
1014		1+96.10	4835.56532	5697.57736	
N89°29'34"W	50.00 '				
1019		2+46.10	4836.00795	5647.57932	
N00°30'27"E	146.08 '				
1018		3+92.18	4982.08222	5648.87321	

Closing latitude = 0.00673  
 Closing departure = 0.00006  
 Closing bearing = S00°28'59"W  
 Closing distance = 0.00673  
 Total traverse length = 392.17 (392.18)  
 Total error of closure = 1/58305  
 Error of closure in latitude = 1/58308  
 Error of closure in departure = 1/6916930

Area = 7304.95 SQ FT  
 Area = 0.17 ACRES

