

ADDENDUM NO. 3
Variable Lane Use Control
RFB # 20-002

ATTENTION: All Bidders and Planholders

You are hereby notified that in Addendum No. 3, the Bid and Contract Documents are amended as follows:

A) PLANS

- (1) Sheet 0, COVER:**
DELETE this sheet and REPLACE with the attached revised cover sheet.
This change deletes the S 348th St (SR 18) & Enchanted Pkwy S (SR 161)/16th Ave S and SR 18 & I-5 SB intersections from this project.
- (2) Sheet 11, TS10:**
DELETE this sheet.
This change deletes the S 348th St (SR 18) & Enchanted Pkwy S (SR 161)/16th Ave S and SR 18 & I-5 SB intersections from this project.
- (3) Sheet 12, TS11:**
DELETE this sheet.
This change deletes the S 348th St (SR 18) & Enchanted Pkwy S (SR 161)/16th Ave S and SR 18 & I-5 SB intersections from this project.
- (4) Sheet 13, TS12:**
DELETE this sheet.
This change deletes the S 348th St (SR 18) & Enchanted Pkwy S (SR 161)/16th Ave S and SR 18 & I-5 SB intersections from this project.
- (5) Sheet 14, TS13:**
DELETE this sheet.
This change deletes the S 348th St (SR 18) & Enchanted Pkwy S (SR 161)/16th Ave S and SR 18 & I-5 SB intersections from this project.
- (6) Sheet 16, TSD02:**
DELETE this sheet and REPLACE with the attached Sheet TSD02.
This change deletes the S 348th St (SR 18) & Enchanted Pkwy S (SR 161)/16th Ave S and SR 18 & I-5 SB intersections from this project.
- (7) Sheet 17, TSD03:**

DELETE this sheet.

This change deletes the S 348th St (SR 18) & Enchanted Pkwy S (SR 161)/16th Ave S and SR 18 & I-5 SB intersections from this project.

(8) Sheet 18, AL01:

DELETE this sheet.

This change deletes the S 348th St (SR 18) & Enchanted Pkwy S (SR 161)/16th Ave S and SR 18 & I-5 SB intersections from this project.

(9) Sheet 19, CH01:

DELETE this sheet.

This change deletes the S 348th St (SR 18) & Enchanted Pkwy S (SR 161)/16th Ave S and SR 18 & I-5 SB intersections from this project.

(10) Sheet 20, CH02:

DELETE this sheet.

This change deletes the S 348th St (SR 18) & Enchanted Pkwy S (SR 161)/16th Ave S and SR 18 & I-5 SB intersections from this project.

(11) Sheet 21, TTC00:

DELETE this sheet and REPLACE with the attached Sheet TTC00.

This change deletes the S 348th St (SR 18) & Enchanted Pkwy S (SR 161)/16th Ave S and SR 18 & I-5 SB intersections from this project.

(12) Sheet 27, TTC06:

DELETE this sheet.

This change deletes the S 348th St (SR 18) & Enchanted Pkwy S (SR 161)/16th Ave S and SR 18 & I-5 SB intersections from this project.

(13) Sheet 28, TTC07:

DELETE this sheet.

This change deletes the S 348th St (SR 18) & Enchanted Pkwy S (SR 161)/16th Ave S and SR 18 & I-5 SB intersections from this project.

(14) Sheet 29, TTC08:

DELETE this sheet.

This change deletes the S 348th St (SR 18) & Enchanted Pkwy S (SR 161)/16th Ave S and SR 18 & I-5 SB intersections from this project.

(15) Sheet 33, TTC12:

DELETE this sheet.

This change deletes the S 348th St (SR 18) & Enchanted Pkwy S (SR 161)/16th Ave S and SR 18 & I-5 SB intersections from this project.

B) CONTRACT DOCUMENTS

- (1) Request for Bids, Bid Schedule A (Pages RFB-8 to RFB-9):**
DELETE these two pages and REPLACE with the attached two pages.
This change deletes the S 348th St (SR 18) & Enchanted Pkwy S (SR 161)/16th Ave S and SR 18 & I-5 SB intersections from this project.
- (2) Special Provisions, 8-04 Curbs, Gutters, and Spillways (Page SP-88):**
DELETE this section in its entirety.
- (3) Special Provisions, 8-09 Raised Pavement Markers (Page SP-88):**
DELETE this section in its entirety.
- (4) Special Provisions, 8-11 Guardrail (Page SP-90):**
DELETE this section in its entirety.
- (5) Special Provisions, 8-17 Impact Attenuator Systems (Page SP-90):**
DELETE this section in its entirety.
- (6) Special Provisions, 8-20.3(1) General (Pages SP-91 to SP-92):**
DELETE the subsection titled "Fiber Optic Cable Installation".
- (7) Special Provisions, 8-20.3(8)B Fiber Optic Cable Installation (Pages SP-103 to SP-112):**
DELETE this section in its entirety.
- (8) Special Provisions, 8-20.3(8)C Video, Voice, and Data Distribution and Transmission System (Page SP-112):**
DELETE this section in its entirety.
- (9) Special Provisions, 9-16 Fence and Guardrail (Page SP-125):**
DELETE this section in its entirety.
- (10) Special Provisions, 9-21 Raised Pavement Markers (RPM) (Page SP-125):**
DELETE this section in its entirety.
- (11) Special Provisions, 9-29.2(5)E Fiber Vaults (Pages SP-129 to SP-130):**
DELETE this section in its entirety.
- (12) Special Provisions, 9-29.13(3) Traffic Signal Controller (Page SP-136):**
DELETE the column titled "S 348th St (SR 18) & Enchanted Pkwy S (SR 161)" and the column titled "SR 18 & I-5 SB".
- (13) Special Provisions, 9-29.13(3) Traffic Signal Controller (Page SP-137):**
DELETE "Fiber Optic Communication Equipment" from the list in the first paragraph.

(14) **Special Provisions, 9-29.13(10)A Auxiliary Equipment for NEMA Controllers (Page SP-141):**

DELETE item 21.

C) BID OPENING

The bid opening date has not changed.

All bidders are required to acknowledge receipt of this addendum on page RFB-11 of the Bid Form. Failure to do so may cause rejection of the bid.

CITY OF FEDERAL WAY

A handwritten signature in blue ink, appearing to read "John Mulkey", is written over the typed name.

John Mulkey, P.E.
Senior Capital Engineer



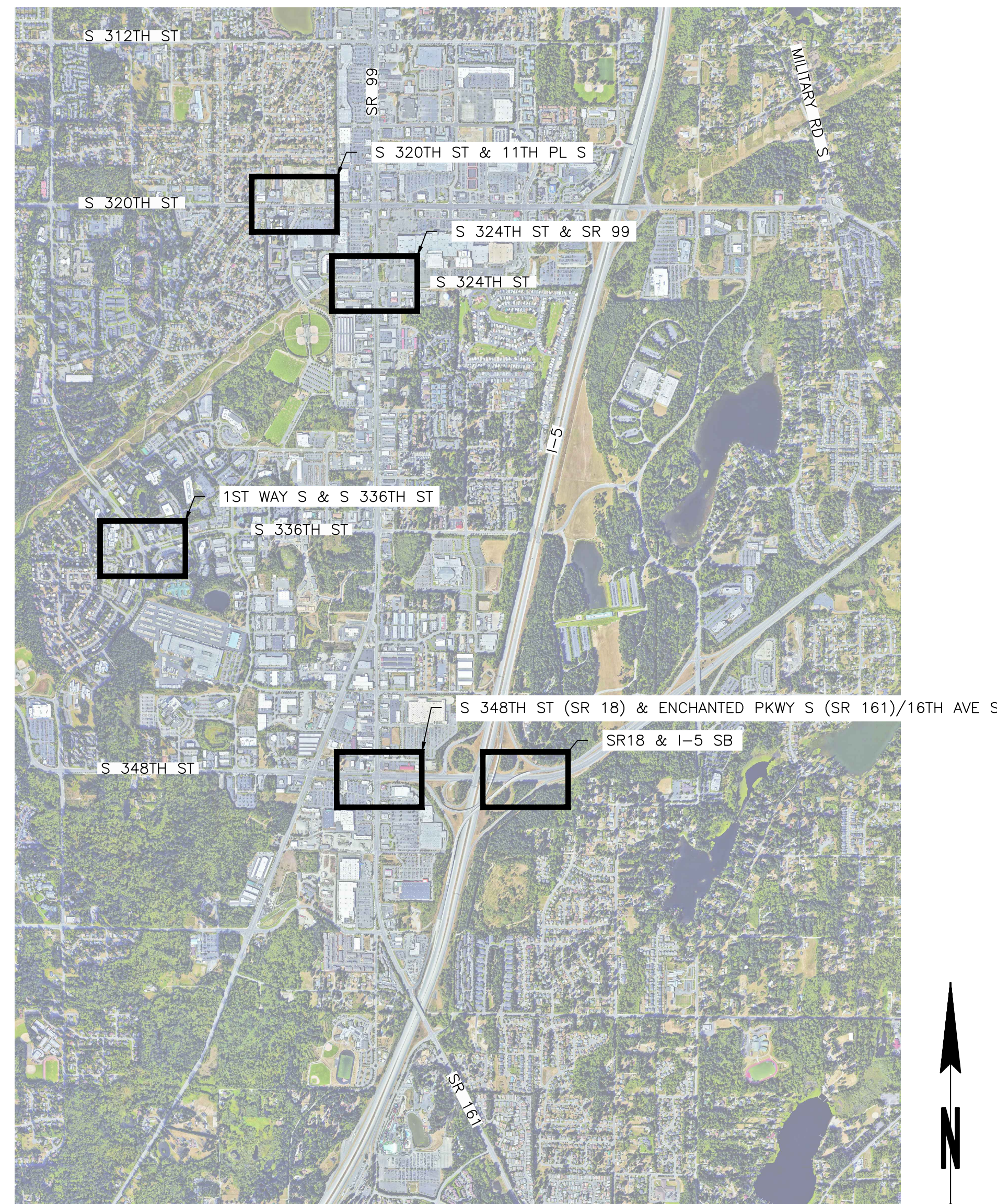
CITY OF FEDERAL WAY
 DEPARTMENT OF PUBLIC WORKS
 33325 8TH AVE S
 FEDERAL WAY, WA 98003

VARIABLE LANE USE CONTROL CITY OF FEDERAL WAY

FEBRUARY 2020

APPROVED FOR CONSTRUCTION	
Desiree S. Winkler, P.E. Deputy Public Works Director	Date

FEDERAL AID PROJECT NO. AID-0443(009)
 LOCAL PROJECT NO. 213
 RFB NO. 20-002



VICINITY MAP

N.T.S



SHEET INDEX

SHEET NO.	SHEET NAME	INTERSECTION NAME
1	TSN01	NOTES AND LEGEND
2	TS01	TRAFFIC SIGNAL PLAN - S 324TH ST & SR 99
3	TS02	TRAFFIC SIGNAL DETAILS - S 324TH ST & SR 99
4	TS03	TRAFFIC SIGNAL PHASING - S 324TH ST & SR 99
5	TS04	TRAFFIC SIGNAL PLAN - S 336TH ST & 1ST WAY S
6	TS05	TRAFFIC SIGNAL PHASING - S 336TH ST & 1ST WAY S
7	TS06	TRAFFIC SIGNAL FIELD WIRING TERMINATIONS - S 336TH ST & 1ST WAY S
8	TS07	TRAFFIC SIGNAL PLAN - S 320TH ST & 11TH PL S
9	TS08	TRAFFIC SIGNAL PHASING - S 320TH ST & 11TH PL S
10	TS09	TRAFFIC SIGNAL FIELD WIRING TERMINATIONS - S 320TH ST & 11TH PL S
11	TS10	TRAFFIC SIGNAL NOTES - ENCHANTED PKWY S & S 348TH ST
12	TS11	TRAFFIC SIGNAL PLAN - ENCHANTED PKWY S & S 348TH ST
13	TS12	TRAFFIC SIGNAL PHASING - ENCHANTED PKWY S & S 348TH ST
14	TS13	TRAFFIC SIGNAL PLAN - SR 18 & I-5 SB
15	TSD01	TRAFFIC SIGNAL POLE CHART
16	TSD02	TRAFFIC SIGNAL POLE CHART
17	TSD03	COMMUNICATION DETAILS
18	AL01	ALIGNMENT CONTROL PLAN - ENCHANTED PKWY S & S 348TH ST
19	CH01	CHANNELIZATION PLAN - ENCHANTED PKWY S & S 348TH ST
20	CH02	MEDIAN DETAILS - ENCHANTED PKWY S & S 348TH ST
21-33	TTC00-TTC12	TEMPORARY TRAFFIC CONTROL NOTES

SHEETS DELETED AS PART OF ADDENDUM #2

SHEETS DELETED AS PART OF ADDENDUM #2

TEMPORARY TRAFFIC CONTROL (TTC) NOTES:

1. MAINTAIN ACCESS TO ALL PRIVATE DRIVEWAYS AND BUS STOPS AT ALL TIMES
2. ALL TEMPORARY TRAFFIC CONTROL (TTC) SHALL BE IN ACCORDANCE WITH THE LATEST EDITION MANUAL ON UNIFORM TRAFFIC CONTROL DEVICES (MUTCD) PART 6 AND THE WSDOT STANDARD SPECIFICATIONS FOR ROAD, BRIDGE, AND MUNICIPAL CONSTRUCTION.
3. ALL W-SERIES SIGNS SHALL BE BLACK LEGEND ON ORANGE BACKGROUND, UNLESS OTHERWISE SPECIFIED.
4. ALL R-SERIES SIGNS SHALL BE BLACK LEGEND ON WHITE BACKGROUND, UNLESS OTHERWISE SPECIFIED.
5. ALL DIAMOND SHAPED WARNING SIGNS SHALL BE 48"x48".
6. A UNIFORMED POLICE OFFICER OR STATE TROOPER SHALL CONTROL INTERSECTION TRAFFIC WHENEVER SIGNAL OPERATIONS ARE IMPACTED, A TRAFFIC SIGNAL IS NOT OPERATIONAL, OR AS SHOWN IN THESE PLANS. TRAFFIC SIGNALS SHALL BE SET TO ALL RED "FLASH" MODE WHEN THE INTERSECTION IS BEING CONTROLLED BY A UNIFORMED POLICE OFFICER OR STATE TROOPER.
7. REDUCE SPACING OF DEVICES SHOWN IN THE "CHANNELIZATION DEVICE SPACING" TABLE BY 1/2 WHERE DEVICES ARE USED AS A "CENTERLINE" TO SEPARATE ADJACENT OPPOSING LANES OF TRAFFIC.
8. ALL STREET LIGHT INSTALLATIONS ON EXISTING POLES SHALL BE COMPLETED DURING LANE CLOSURES FOR OTHER WORK OR COMPLETED WITHOUT BLOCKING TRAVEL LANES. ALL WORK TRUCKS REQUIRED TO INSTALL STREET LIGHTS SHALL HAVE A ROTATING BEACON IN COMPLIANCE WITH MUTCD CHAPTER 6H.
9. TYPE 3 BARRICADES SHALL CONFORM TO WSDOT STANDARD PLAN K-80.20-00.
10. PROVIDE ALL PEDESTRIANS WITH AN ALTERNATE ACCESSIBLE ROUTE WHEN THE CONSTRUCTION ACTIVITY OR TTC CLOSES AN ACCESSIBLE PEDESTRIAN ROUTE. THE FOLLOWING GUIDANCE AND DETAIL ON SHEET TC02 ARE PROVIDED REGARDING TEMPORARY TRAFFIC CONTROL FOR PEDESTRIANS:
 - 10.1. TTC DEVICES AND OTHER CONSTRUCTION MATERIALS/FEATURES SHALL NOT INTRUDE INTO THE USABLE WIDTH OF PEDESTRIAN ROUTES.
 - 10.2. PROVIDE A MINIMUM 84" VERTICAL CLEARANCE FOR PEDESTRIAN ROUTES. SIGNS AND OTHER DEVICES MOUNTED LOWER THAN 84" ABOVE THE PEDESTRIAN ROUTE SHALL NOT PROJECT MORE THAN 4" INTO THE PEDESTRIAN ROUTE.
 - 10.3. MAINTAIN THE WIDTH OF EXISTING PEDESTRIAN FACILITIES WHEN FEASIBLE. WHEN IT IS NOT FEASIBLE TO MAINTAIN A MINIMUM WIDTH OF 60" THROUGHOUT THE LENGTH OF THE PEDESTRIAN ACCESSIBLE ROUTE, A MINIMUM WIDTH OF 48" SHALL BE PROVIDED WITH 60" X 60" PASSING ZONES SPACED AT MAXIMUM INTERVALS OF 200' TO ALLOW INDIVIDUALS IN WHEELCHAIRS TO PASS.
 - 10.4. PROVIDE A SMOOTH, CONTINUOUS HARD SURFACE THROUGHOUT THE ENTIRE LENGTH AND WIDTH OF THE PEDESTRIAN ROUTE THROUGH THE WORK ZONE. THERE SHALL BE NO CURBS OR VERTICAL ELEVATION CHANGES GREATER THAN 1/2" IN GRADE OR TERRAIN THAT COULD CAUSE TRIPPING OR BE A BARRIER TO WHEELCHAIR USE. VERTICAL ELEVATION DIFFERENCES BETWEEN 1/4" AND 1/2" SHALL BE BEVELED AT A MAXIMUM 2:1 SLOPE.
 - 10.5. WHEN CHANNELIZATION IS USED TO DELINEATE A PEDESTRIAN PATHWAY, A CONTINUOUS DETECTABLE EDGING SHALL BE PROVIDED THROUGHOUT THE LENGTH OF THE FACILITY SUCH THAT PEDESTRIANS USING A CANE CAN FOLLOW IT. EDGING SHALL PROTRUDE AT LEAST 6" ABOVE THE SURFACE OF THE SIDEWALK OR PATHWAY WITH THE BOTTOM OF EDGING A MAXIMUM OF 2.5" ABOVE THE SURFACE.
 - 10.6. AT LOCATIONS WHERE ADJACENT ALTERNATE ROUTES CANNOT BE PROVIDED, APPROPRIATE SIGNS SHALL BE POSTED IN ADVANCE OF THE CLOSURE AT THE NEAREST MARKED CROSSWALK OR INTERSECTION TO DETOUR PEDESTRIANS ACROSS THE STREET. PHYSICAL BARRICADES SHALL BE INSTALLED TO PREVENT VISUALLY IMPAIRED PEOPLE FROM INADVERTENTLY ENTERING A CLOSED AREA. APPROPRIATE SIGNING SHALL BE PLACED AT THE INTERSECTIONS PRIOR TO ANY PEDESTRIAN ROUTE CLOSURE.
 - 10.7. PROVIDE TEMPORARY RAMPS WHEN AN ALTERNATE PEDESTRIAN ROUTE CROSSES A CURB AND NO PERMANENT CURB RAMPS ARE IN PLACE. THE WIDTH OF THE CURB RAMP SHALL BE A MINIMUM OF 48" AND THE MAXIMUM SLOPE OF THE RAMP SHALL BE 8.3%. THE MAXIMUM CROSS SLOPE SHALL BE 2%. THE BOTTOM OF THE CURB RAMP SHALL BE FLUSH WITH THE ROADWAY. TEMPORARY DETECTABLE WARNING MATS SHALL BE INSTALLED AT STREET CROSSINGS.
 - 10.8. INFORMATION REGARDING CLOSED PEDESTRIAN ROUTES, ALTERNATE CROSSINGS, AND SIGN AND SIGNAL INFORMATION SHALL BE COMMUNICATED TO PEDESTRIANS WITH VISUAL DISABILITIES BY PROVIDING DEVICES SUCH AS AUDIBLE INFORMATION DEVICES, ACCESSIBLE PEDESTRIAN SIGNALS, OR BARRIERS/CHANNELIZATION DEVICES THAT ARE DETECTABLE TO PEDESTRIANS TRAVELING WITH THE AID OF A CANE OR WHO HAVE LOW VISION.
11. WORK DURING HOURS OF DARKNESS SHALL PROVIDE:
 - 11.1. ILLUMINATION AT ALL FLAGGING STATIONS.
 - 11.2. TYPE C STEADY BURNING LIGHTS ON TRAFFIC CONTROL DEVICES.
12. ALL WORK INVOLVING THE INSTALLATION OF NEW LOOP DETECTORS SHALL BE PERFORMED AT NIGHT, IN ACCORDANCE WITH THE SPECIAL PROVISIONS.

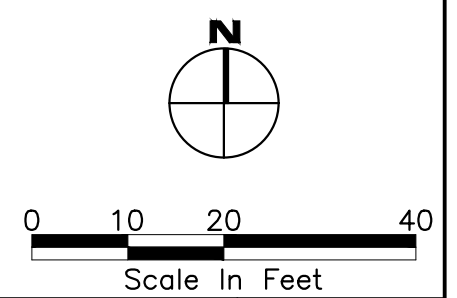
TTC SHEET REFERENCE TABLE:

Sheet No.	Work Element	TTC Detail
S 324TH ST & SR 99	SB LT LOOP/RADAR/VIDEO	B, D
S 324TH ST & SR 99	NB LT LOOP	B, D
S 324TH ST & SR 99	WB RADAR, SIGNAL HEADS	E
S 324TH ST & SR 99	WB RADAR	J
S 324TH ST & SR 99	NB RADAR	L
S 320TH ST & 11TH PL S	EB RADAR	A
S 320TH ST & 11TH PL S	PAVEMENT MARKING REMOVAL, MASTARM POLE CONSTRUCTION	B, C
S 320TH ST & 11TH PL S	WB LT LOOP	B, C
SR 161 & S 348TH ST	SB LT LOOP, VIDEO	B, C
SR 161 & S 348TH ST	EB RADAR	
SR 161 & S 348TH ST	NB RT LOOP, POLE D6 CONSTRUCTION	G, M
SR 161 & S 348TH ST	WB VIDEO, NB VIDEO/RADAR	H
SR 161 & S 348TH ST	D5 MASTARM/HEADS/MEDIAN	K
1ST WAY S & S 336TH ST	WB VIDEO/SIGNAL HEADS	I
1ST WAY S & S 336TH ST	WB ADVANCED MASTARM	B, C

DELETED AS PART OF ADDENDUM #2

EXISTING TRAFFIC SIGNAL SHALL REMAIN FULLY OPERATIONAL AT ALL TIMES

CALL 48 HOURS BEFORE YOU DIG
1-800-424-5555



DESIGNED BY	DATE	REVISION	BY	DATE
RDM	02/26/2020	ADDENDUM #2	RWP	03/19/20
RDM	02/26/2020			
RWP	02/26/2020			

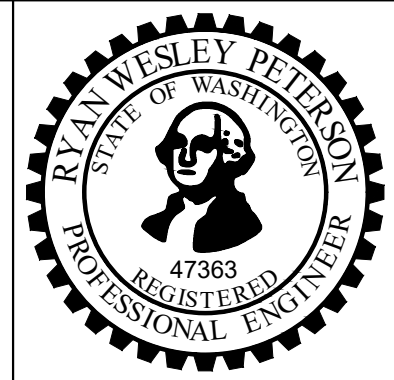


transpogroup

WHAT TRANSPORTATION CAN BE.

12131 113TH AVENUE NE, #203
KIRKLAND, WASHINGTON 98034

(TEL) 425 821-3665
(FAX) 425 825-8434



CITY OF FEDERAL WAY
VARIABLE LANE USE CONTROL

TTC00

TEMPORARY TRAFFIC CONTROL NOTES

SHEET 21 OF 33 SHEETS

\\svr-dfs-wa\Projects\19\19101-00 - Federal way 2019-2021 - services\engineering\300\Sheets\Temporary Traffic Control\TTC - Details - A-K\dwg\TTC_Cover\Banner_Markals_3/20/2020 10:09 AM

NOTE: All entries shall be written in ink or typed. Unit prices for all items, all extensions, and total amount of bid shall be shown. Enter unit prices in numerical figures only, in dollars and cents to two (2) decimal places (including for whole dollar amounts). All figures must be clearly legible. Bids with illegible figures in the unit price column will be regarded as nonresponsive. Where conflict occurs between the unit price and the total amount specified for any item, the unit price shall prevail, and totals shall be corrected to conform thereto. The Bidder shall complete this entire Bid Form or this bid may be considered non-responsive. The City may correct obvious mathematical errors. The City of Federal Way reserves the right to reject any and all bids, waive any informalities or minor irregularities in the bidding, and determine which bid or bidder meets the criteria set forth in the bid documents.

SCHEDULE A: INTERSECTION IMPROVEMENTS						
<i>All unit prices shall include applicable sales tax (Roadway Improvements)</i>						
Item No.	Spec. Div.	Bid Item Description	Unit	Plan Qty	Unit Price	Amount
1	1-04	MINOR CHANGES	FA	1	\$4,000.00	\$4,000.00
2	1-05	ROADWAY SURVEYING	LS	1	\$	\$
3	1-07	TRAINING	HR	400	\$	\$
4	1-07	SPILL PREVENTION, CONTROL, AND COUNTERMEASURES PLAN	LS	1	\$	\$
5	1-05	MOBILIZATION	LS	1	\$	\$
6	1-10	TRAFFIC CONTROL SUPERVISOR	LS	1	\$	\$
7	1-10	FLAGGERS	HR	450	\$	\$
8	1-10	OTHER TRAFFIC CONTROL LABOR	HR	225	\$	\$
9	1-10	CONSTRUCTION SIGNS, CLASS A	SF	75	\$	\$
10	1-10	SEQUENTIAL ARROW SIGN	HR	225	\$	\$
11	1-10	OFF-DUTY UNIFORMED POLICE OFFICER	HR	36	\$	\$
12	1-10	OTHER TEMPORARY TRAFFIC CONTROL	LS	1	\$	\$
13	2-03	ROADWAY EXCAVATION INCL. HAUL	CY	15	\$	\$
14	8-02	SEEDED LAWN INSTALLATION	SY	10	\$	\$
17	8-14	CEMENT CONCRETE SIDEWALK	SY	135	\$	\$
19	8-20	TRAFFIC SIGNAL SYSTEM MODIFICATION, COMPLETE – S 324TH ST & SR 99	LS	1	\$	\$

17	8-20	TRAFFIC SIGNAL SYSTEM MODIFICATION, COMPLETE – S 320TH ST & 11TH PL S	LS	1	\$	\$
18	8-20	TRAFFIC SIGNAL SYSTEM MODIFICATION, COMPLETE – S 336TH ST & 1 ST WAY S	LS	1	\$	\$
19	8-22	REMOVING PAVEMENT MARKINGS	LS	1	\$	\$
20	8-22	PAINT LINE	LF	75	\$	\$
21	8-30	POTHOLING	FA	1	\$2,500.00	\$2,500.00
22	8-30	RESOLUTION OF UTILITY CONFLCTS	FA	1	\$3,000.00	\$3,000.00
TOTAL – SCHEDULE A						\$

BID SUMMARY	
ITEM	BID AMOUNT
SCHEDULE A: INTSERSECTION IMPROVEMENTS	\$
TOTAL BID AMOUNT <i>(including Washington State sales tax, all other government taxes, assessments and charges)</i>	\$

The documents incorporated by reference, as if fully set forth, are the Advertisement for Bids, the Instructions to Bidders and Checklists, the Contractor's Bid Proposal (including all forms and supplemental information listed on the Bidders Checklist), the Contract Documents (including Project Plans, Specifications, and all Appendices, Amendments, and Supplemental Reports & Information), the Contract Provisions (including all forms and supplemental information listed on the Contract Checklist), the version of the Washington State Standard Specifications for Road, Bridge, and Municipal Construction identified herein, and any other documents provided to bidders and/or referenced in or referred to by the Contract Documents.

Pursuant to and in compliance with the Advertisement for Bids for the Project, and other documents relating thereto, the undersigned has carefully examined all of the bid and contract documents, considered conditions which may affect the delivery, supply and maintenance for the Project, and hereby proposes to furnish all labor, materials and perform all work as required in strict accordance with the contract documents, for the referenced bid amount, inclusive of Washington State sales tax and all other government taxes, assessments and charges as required by law.

NON-COLLUSION AFFIDAVIT

By signing this proposal, the undersigned acknowledges that the person(s), firm, association, or corporation has (have) not, either directly or indirectly, entered into any agreement, participated in any collusion, or otherwise taken any action in restraint of free competitive bidding in connection with this project.

To report rigging activities, call 1-800-424-9071. The U.S. Department of Transportation (USDOT) operates the toll-free hotline Monday through Friday, 8:00 a.m. to 5:00 p.m., Eastern Time. Anyone with knowledge of possible bid rigging, bidder collusion, or other fraudulent activities should use the hotline to report such